



## Harris Chain of Lakes Community-Supported Fish Attractor Habitat Enhancement Program

Florida Fish and Wildlife Conservation Commission

# Fish Attractor Habitat Enhancement Program

- The program is designed as a two phased approach to build a community-based fishing improvement initiative
- Phase One is the utilization of local, state and federal resources to construct fish attractors
- Phase Two is envisioned as the local residents assuming ownership of the program and performing the organizational, fiscal and construction responsibilities.





# Program Goals

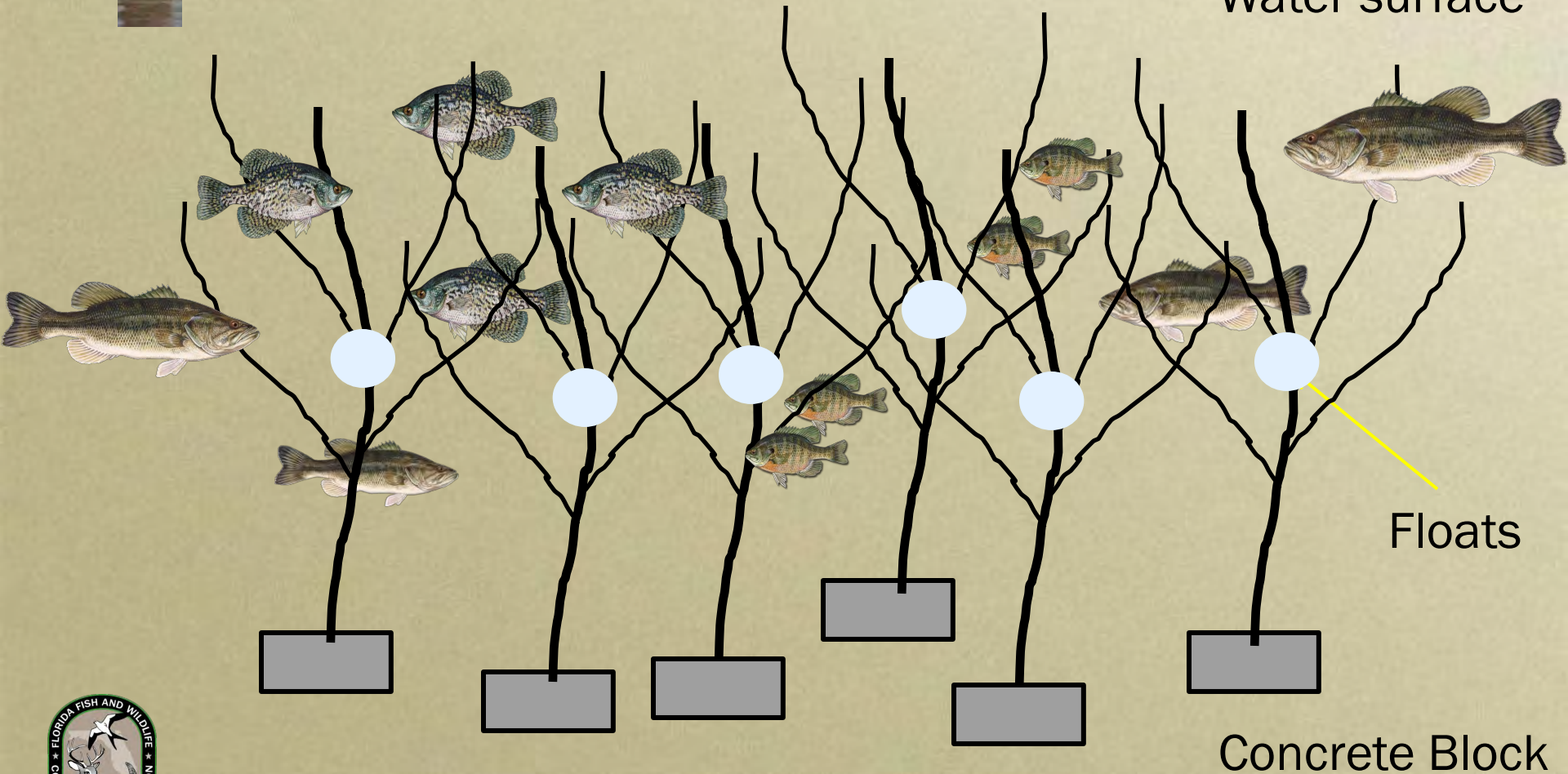
- Concentrate sport fish for anglers
- Enhance angler utilization of existing fish populations
- Build Community Participation and Support for the Harris Chain of Lakes
- Evaluate the economic impact of fish attractor program



# Fish Attractor Design



Water surface



Floats

Concrete Block



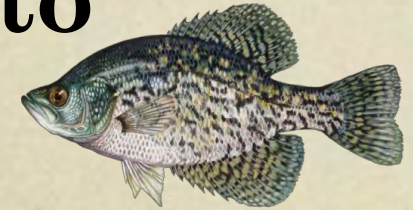


# Projected Fish Attractor Sites





# Anticipated Fishing and Economic Benefits to Lake County



- Enhanced fishing opportunities for Lake County residents
- Increased appreciation and support for lake management and conservation
- Possibility of increasing visitors to Lake County
- Understanding of economic impacts of fish attractors



# Project Evaluation



# Proposed Timeline

## September- December

- Designate attractor sites
- Coordinate volunteers
- Coordinate brush delivery and staging areas with Lake County
- Outreach-You tube, Face book, Twitter



## January – April

- Attractor construction
- Outreach-You tube, Face book, Twitter
- Attractor evaluation
  - Angler survey
  - Fisheries sampling





# Fish Attractor Program Cost Estimates – Fiscal Year 2013-2014

Equipment costs \$110,000

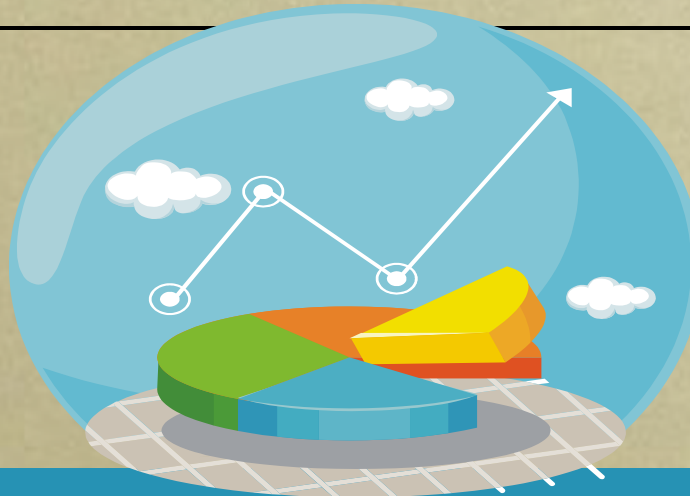
(legislative Operational Cost Outlay, OCO dollars)

Brush Attractor Construction costs \$ 37,500

Outreach - social media, videos \$ 6,000

Evaluation \$ 31,200

Total Cost \$184,700



# Partnerships

## Let's Build Community-Supported Fish Attractor Habitat Enhancement





# Questions



[MyFWC.com](http://MyFWC.com)

