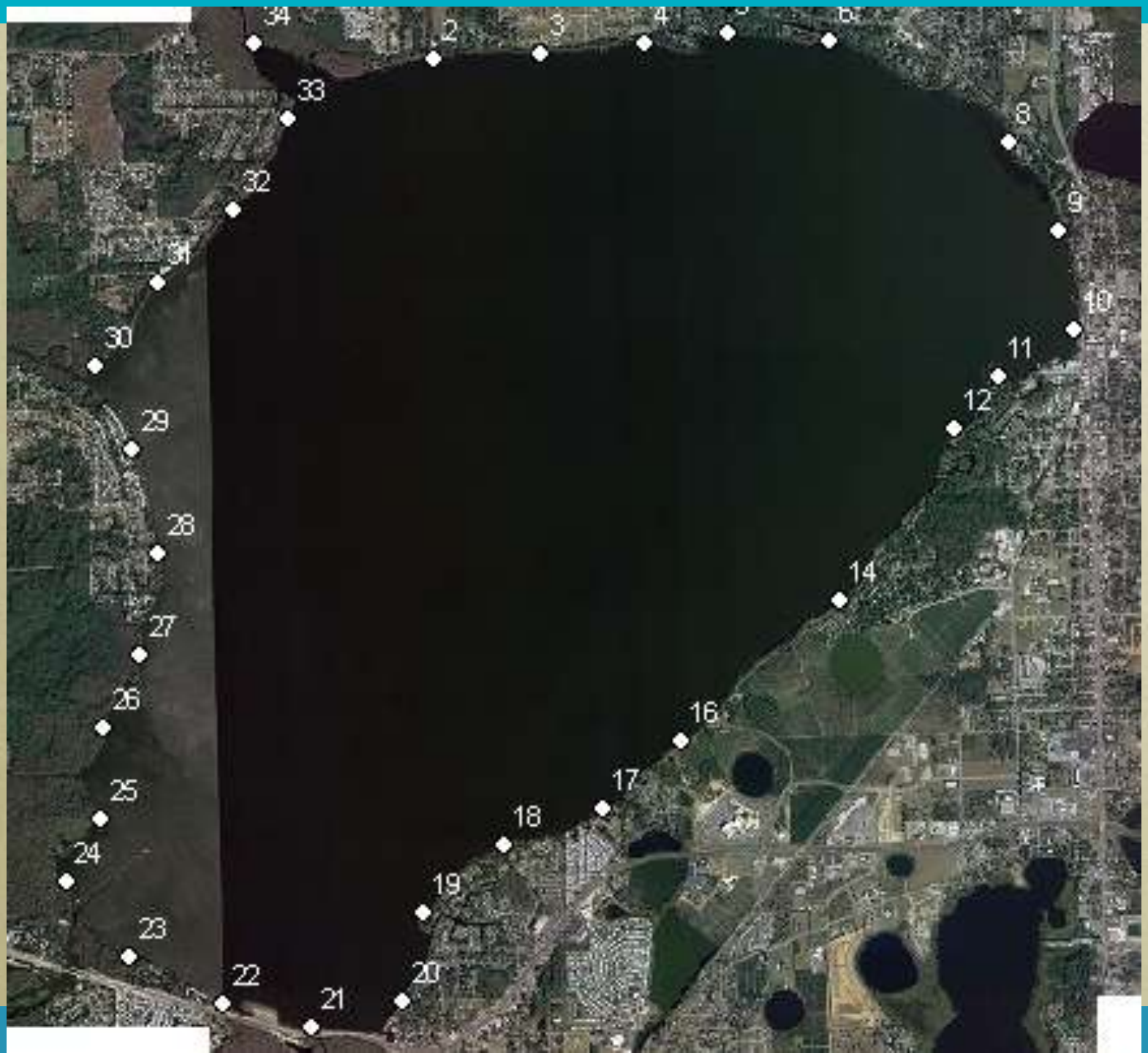


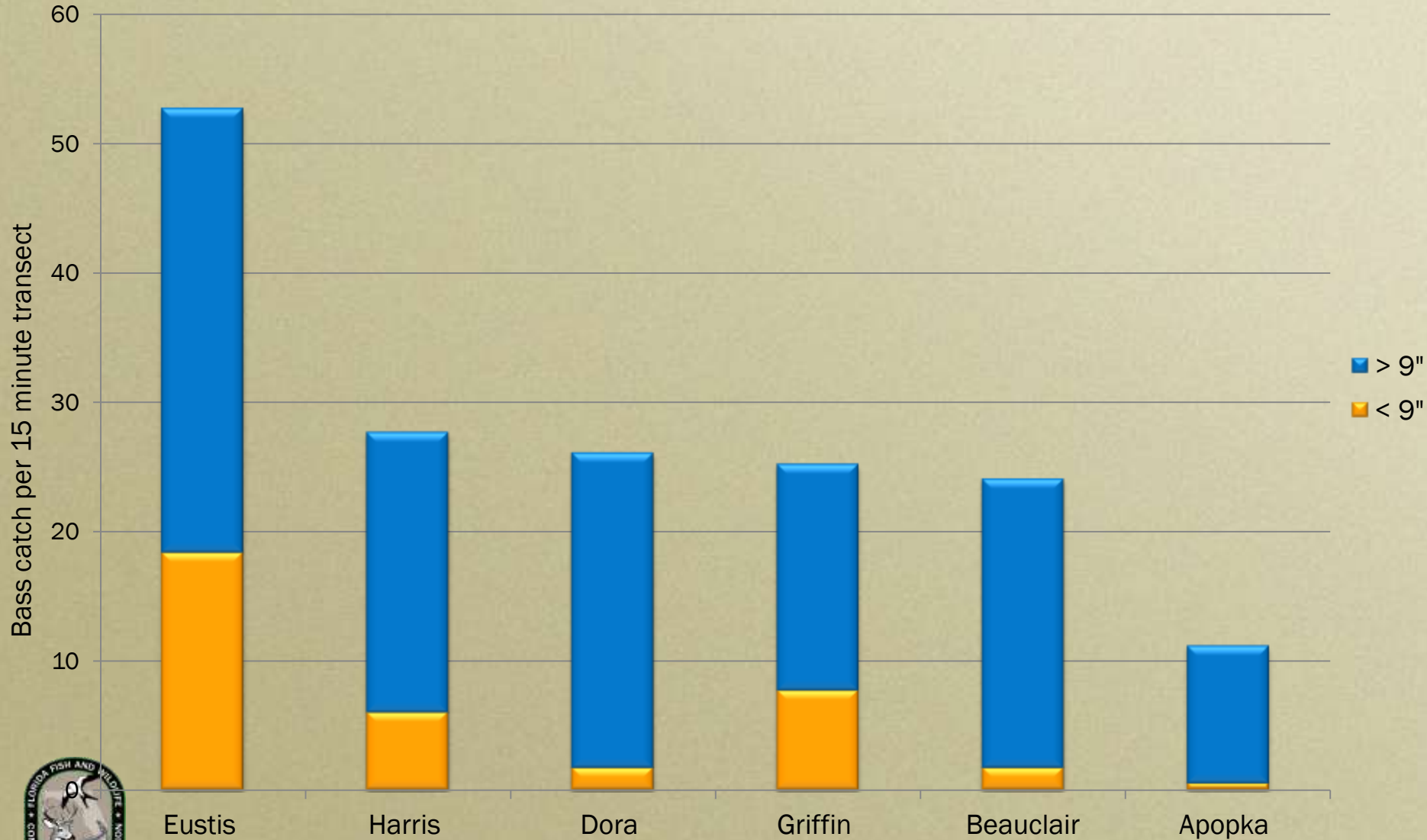
Largemouth Bass

Harris Chain of Lakes

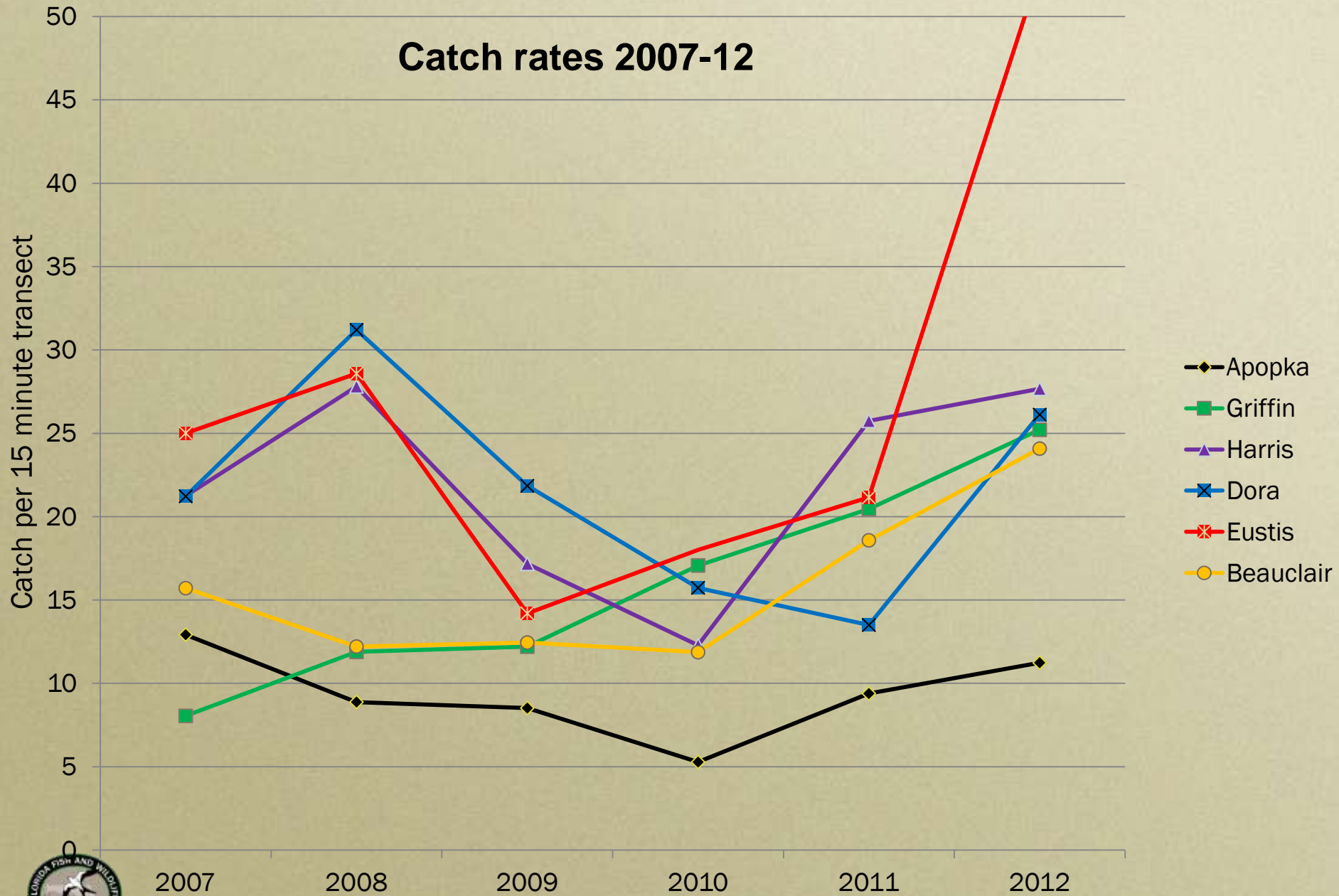




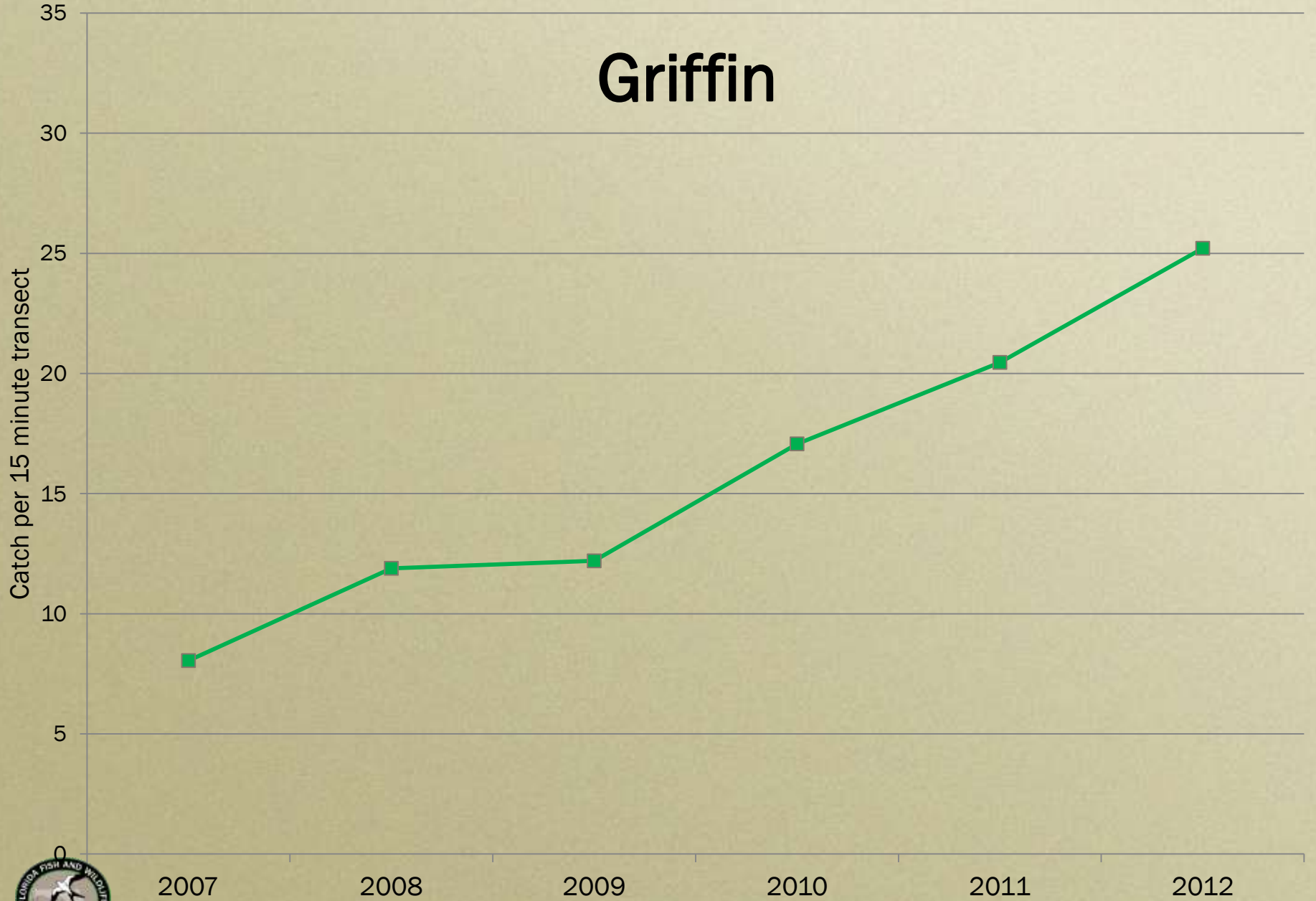
Spring bass electrofishing 2012



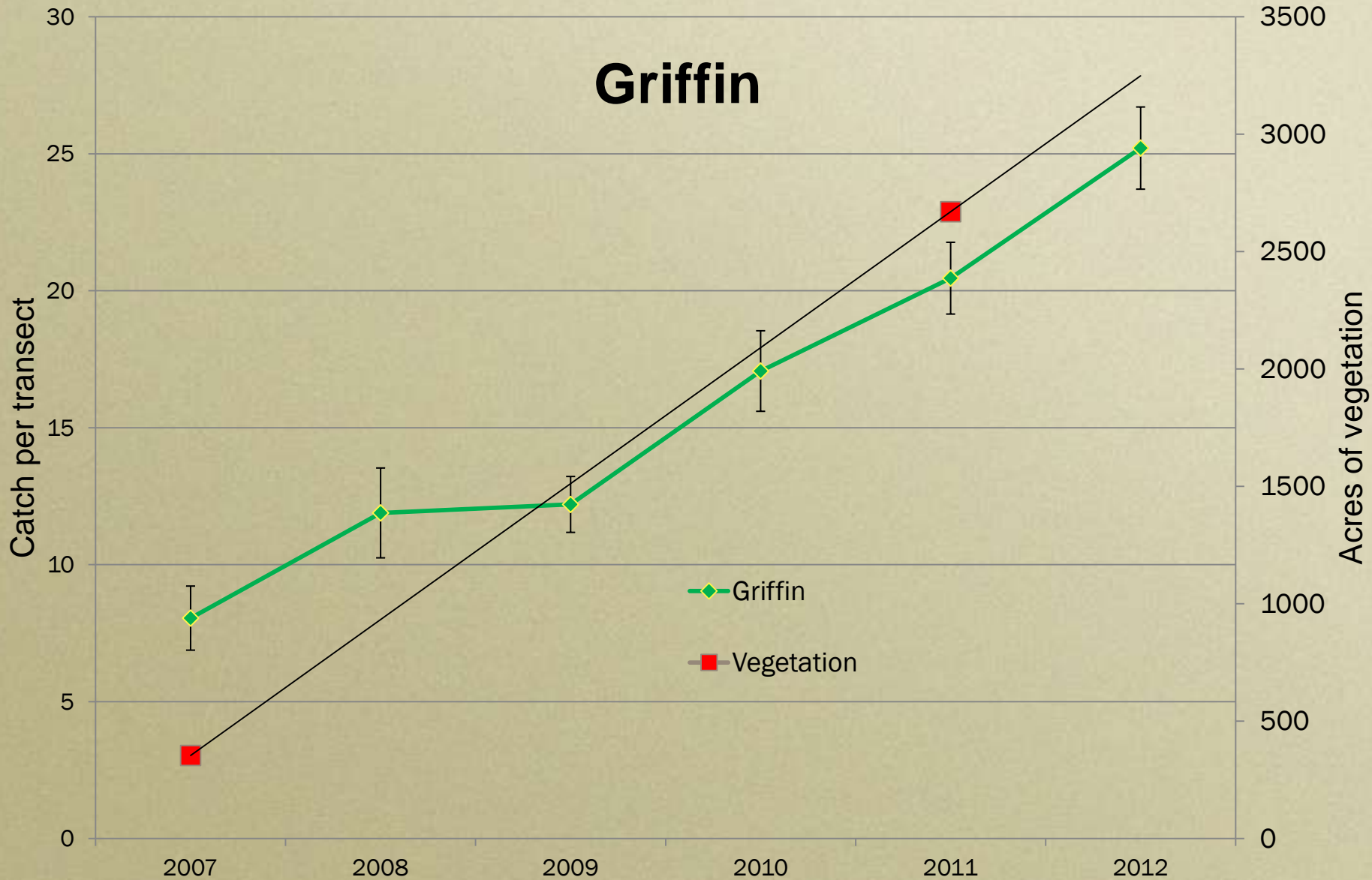
Catch rates 2007-12



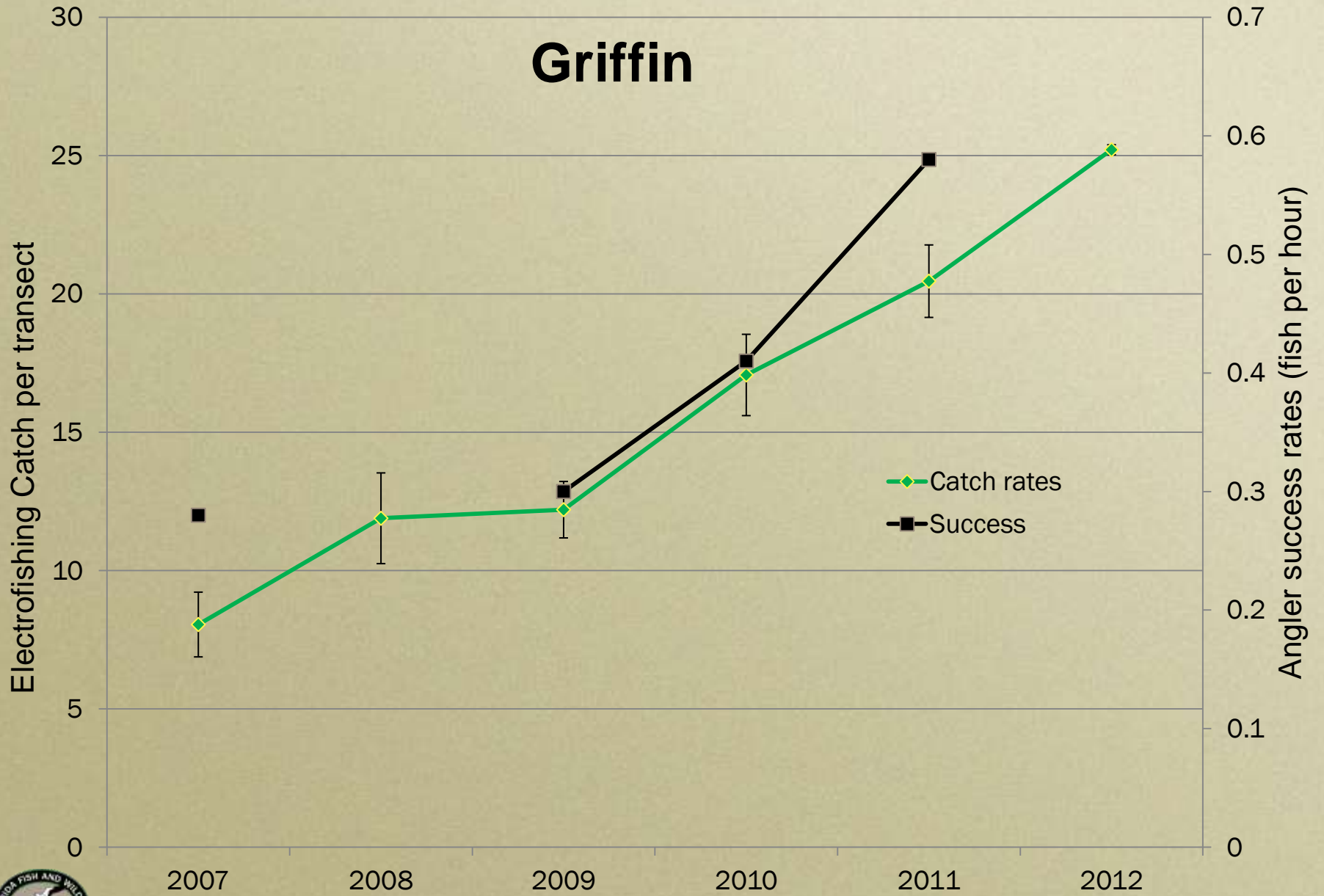
Griffin



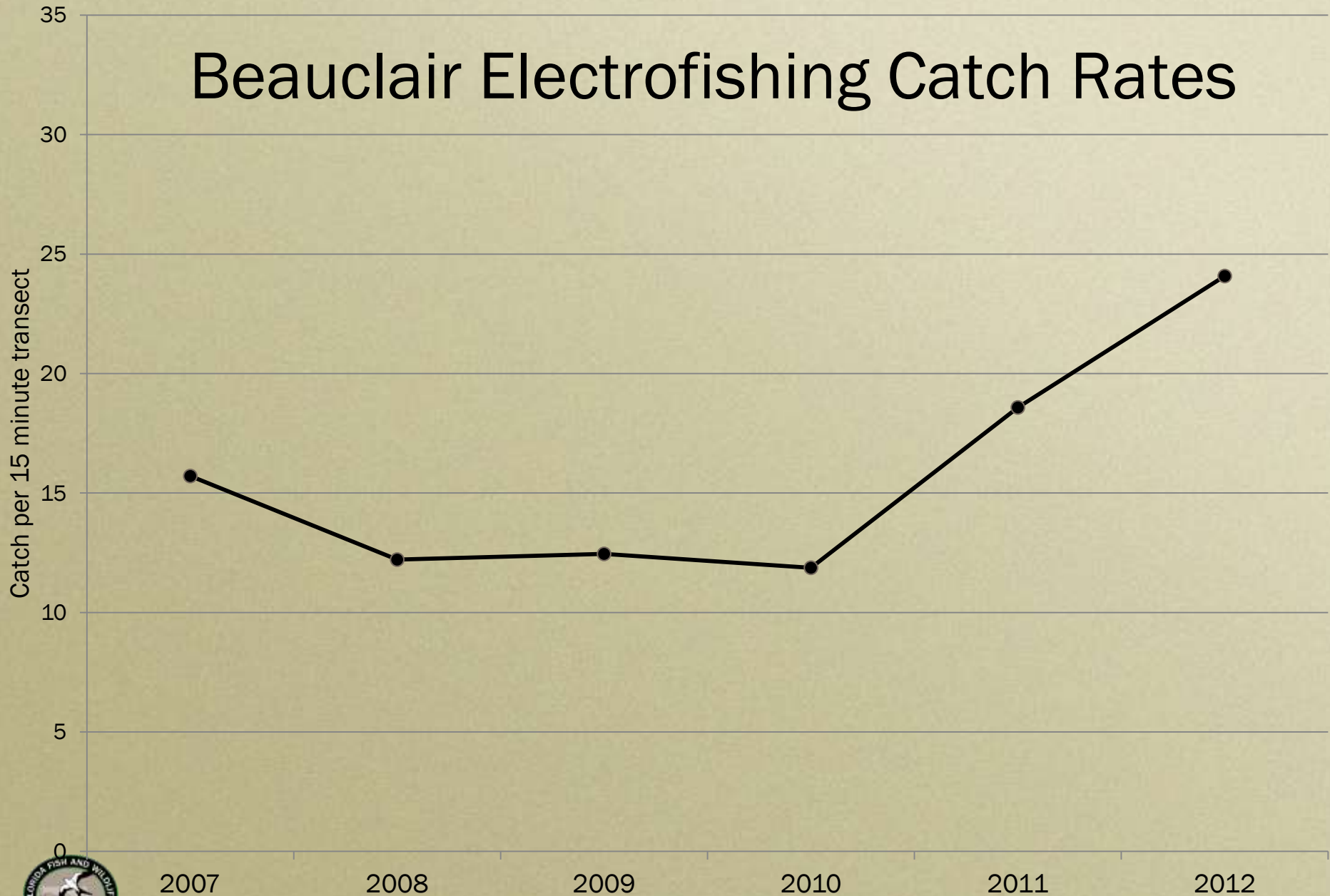
Griffin



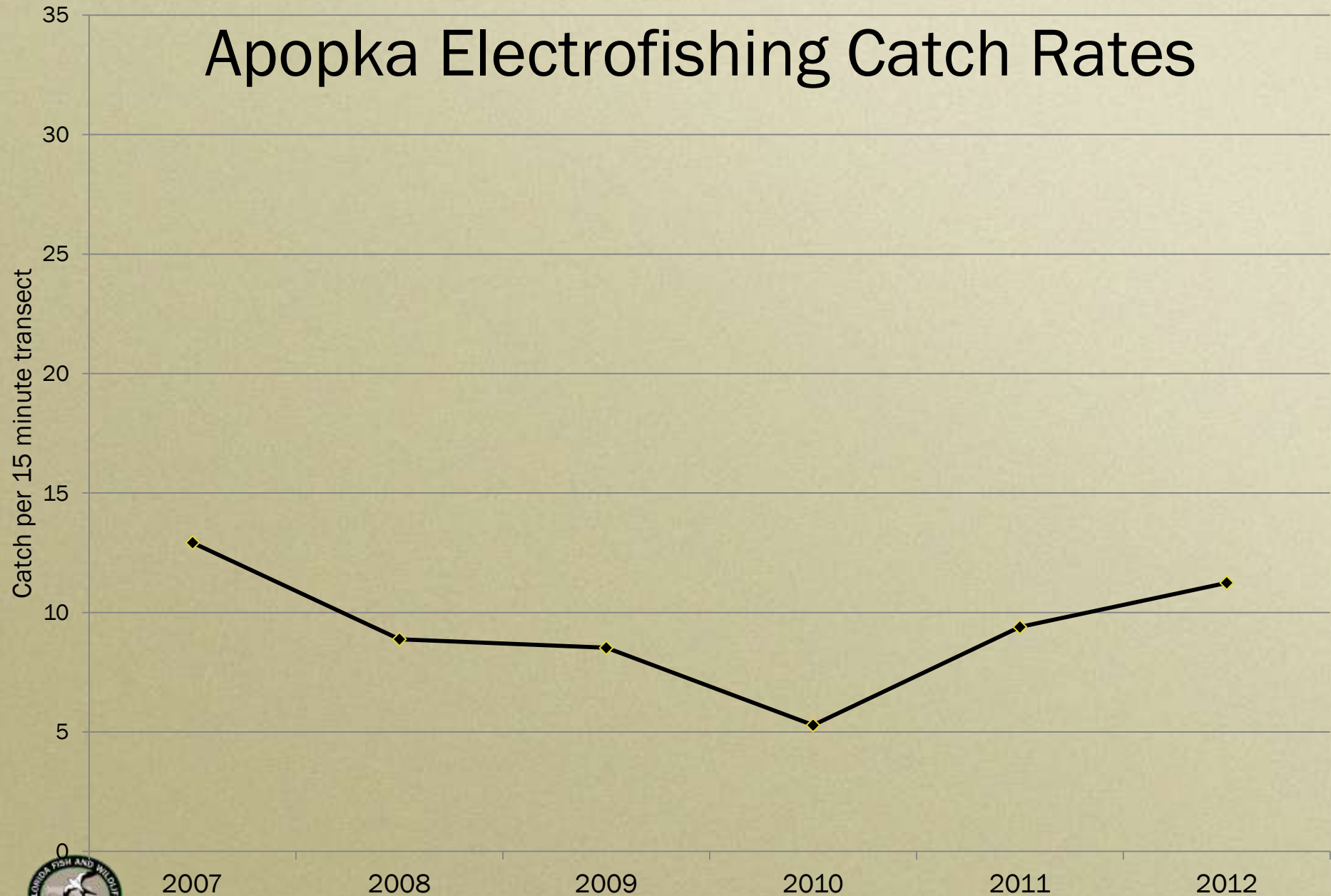
Griffin



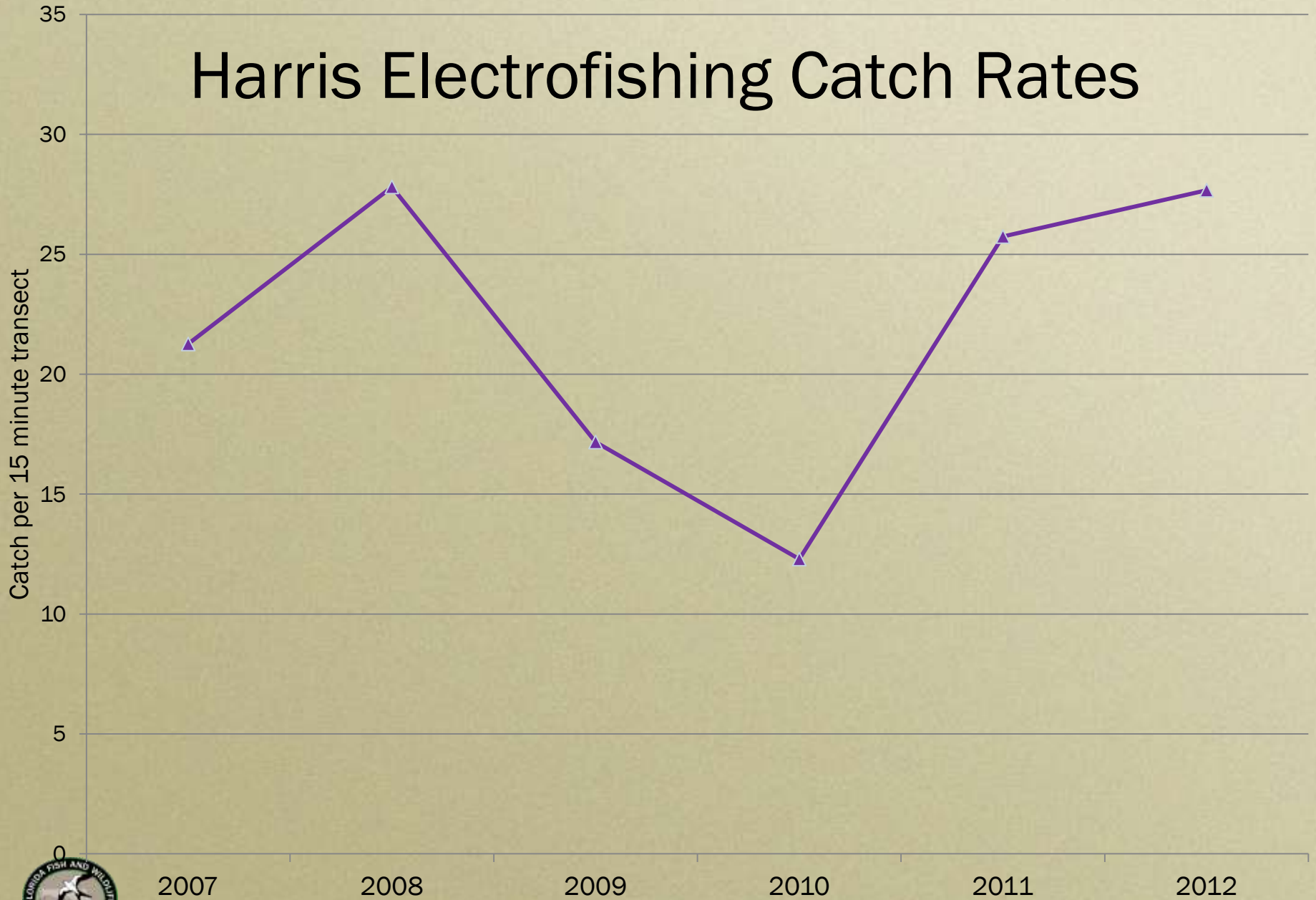
Beauclair Electrofishing Catch Rates



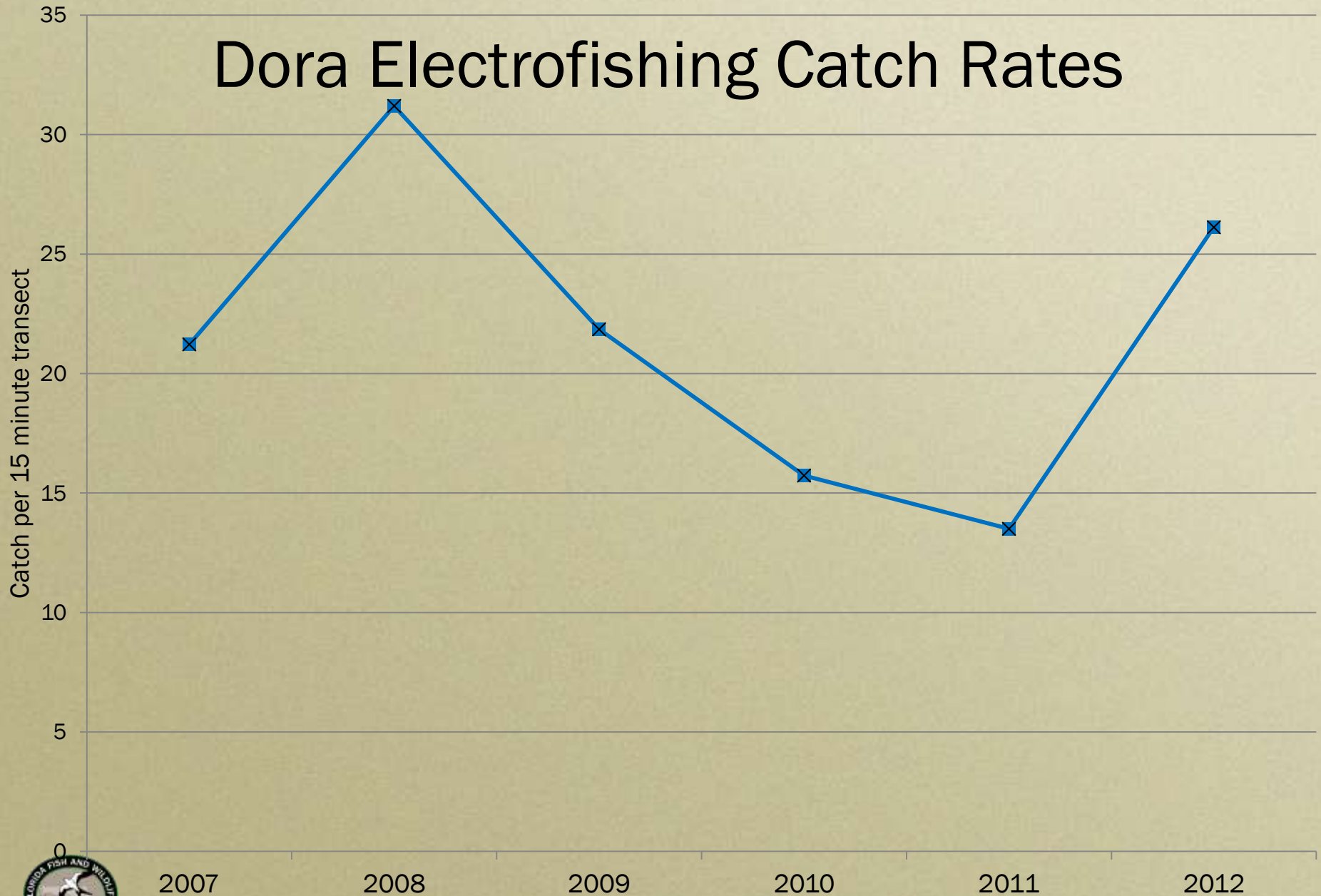
Apopka Electrofishing Catch Rates



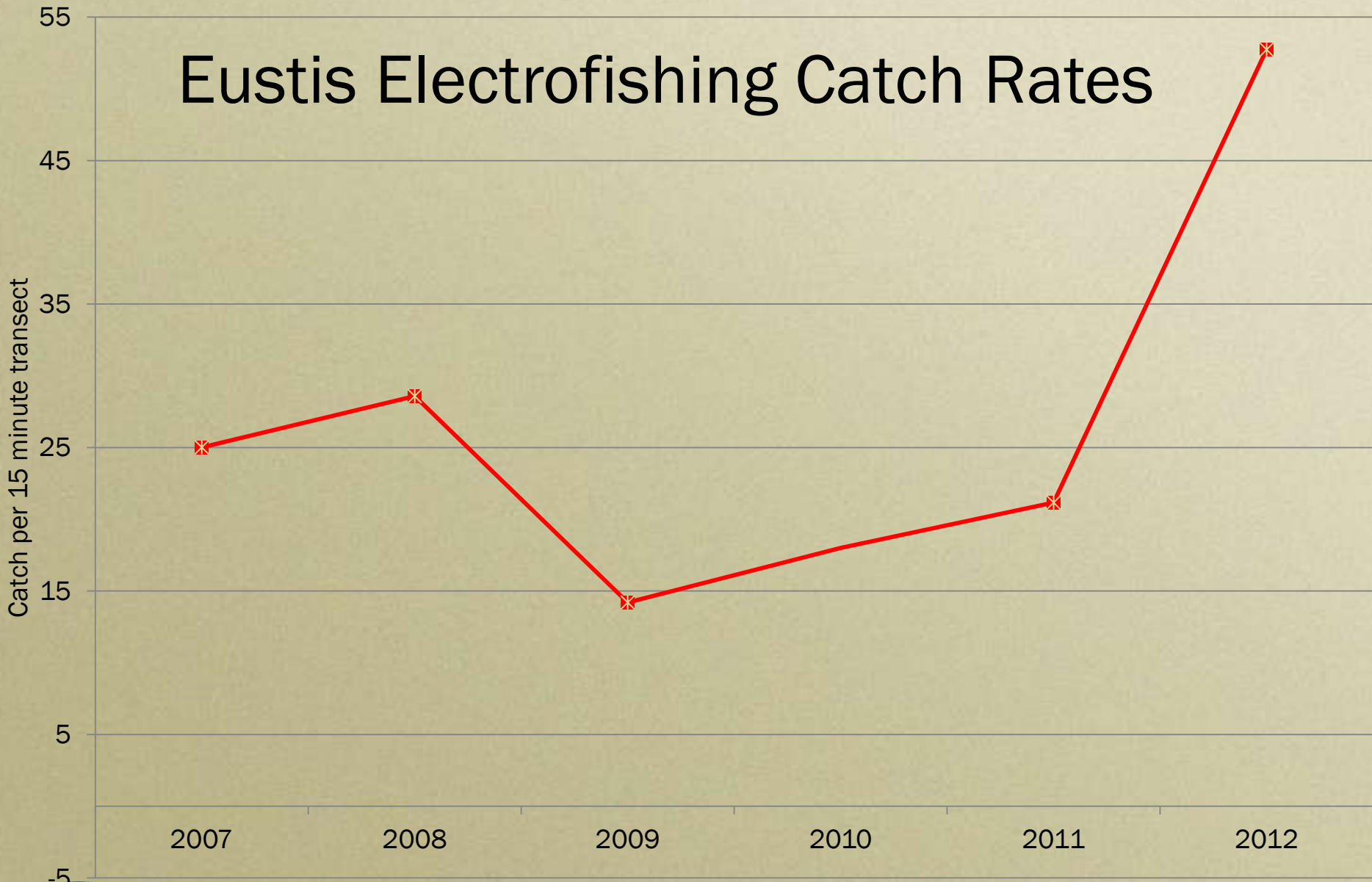
Harris Electrofishing Catch Rates



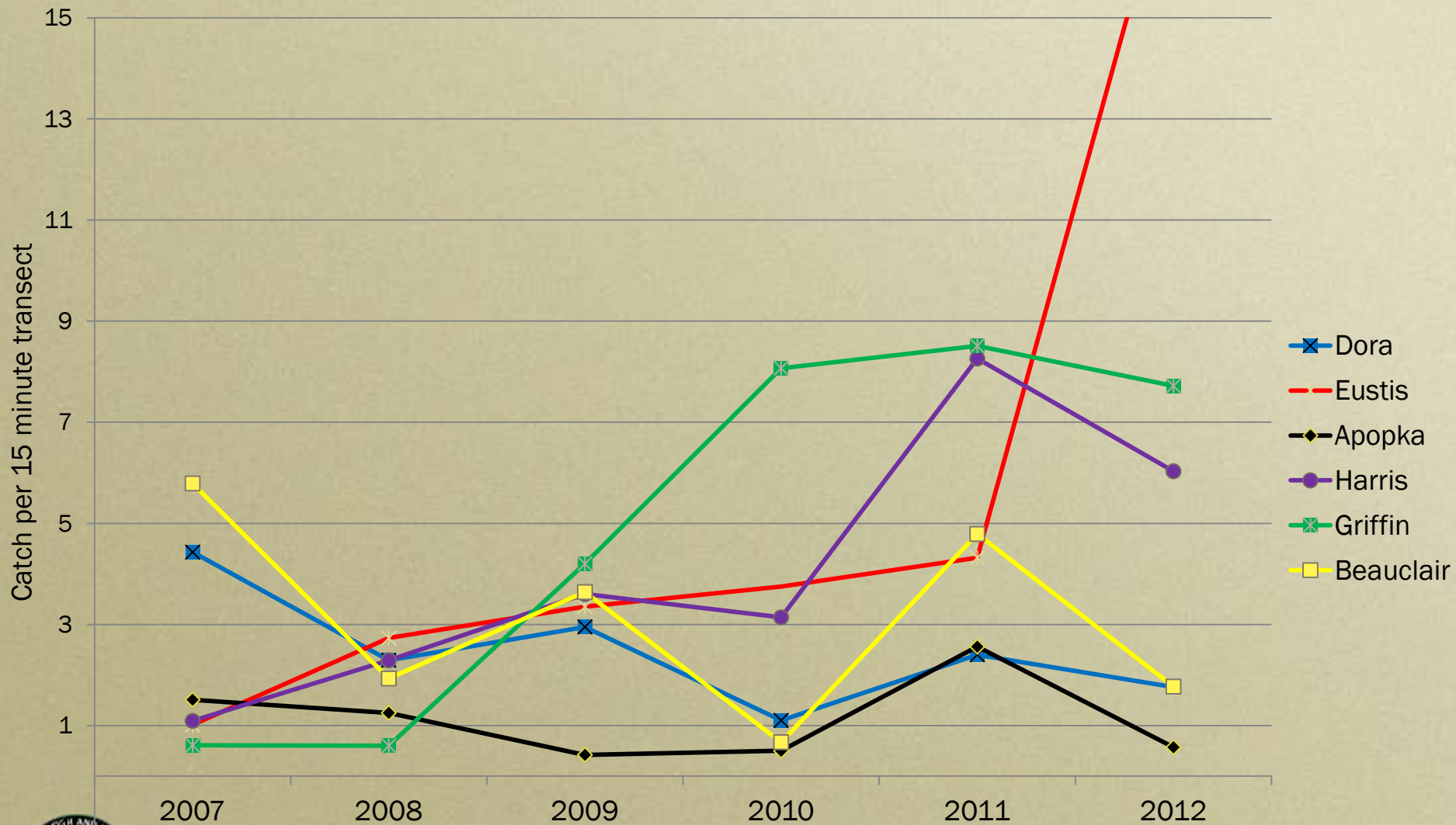
Dora Electrofishing Catch Rates



Eustis Electrofishing Catch Rates



Catch of Age-1 Bass



Dora and Apopka – Age 1



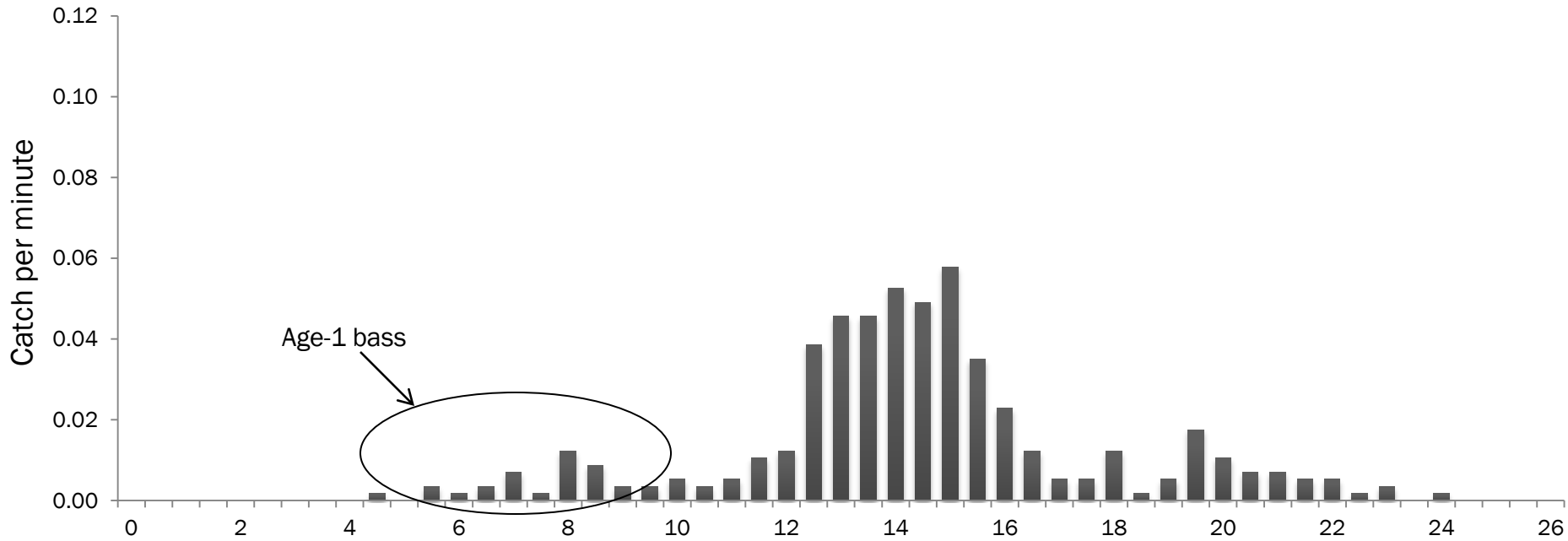
Griffin and Harris – Age 1



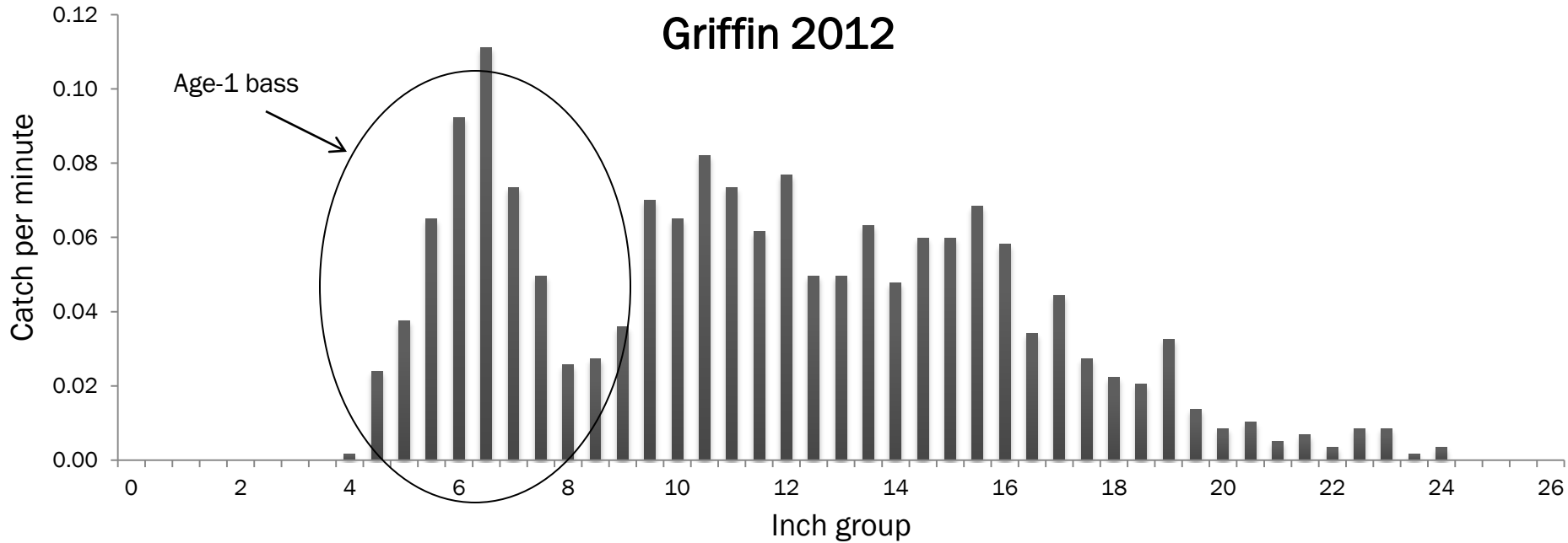
Eustis – Age 1



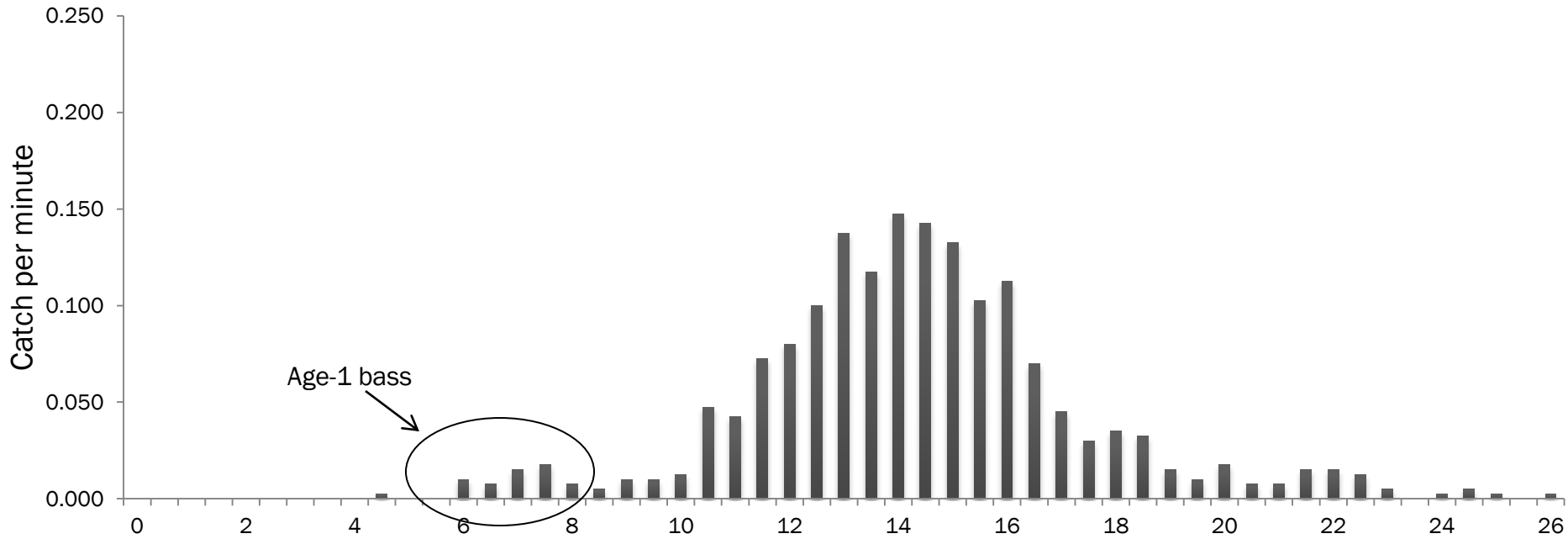
Griffin 2007



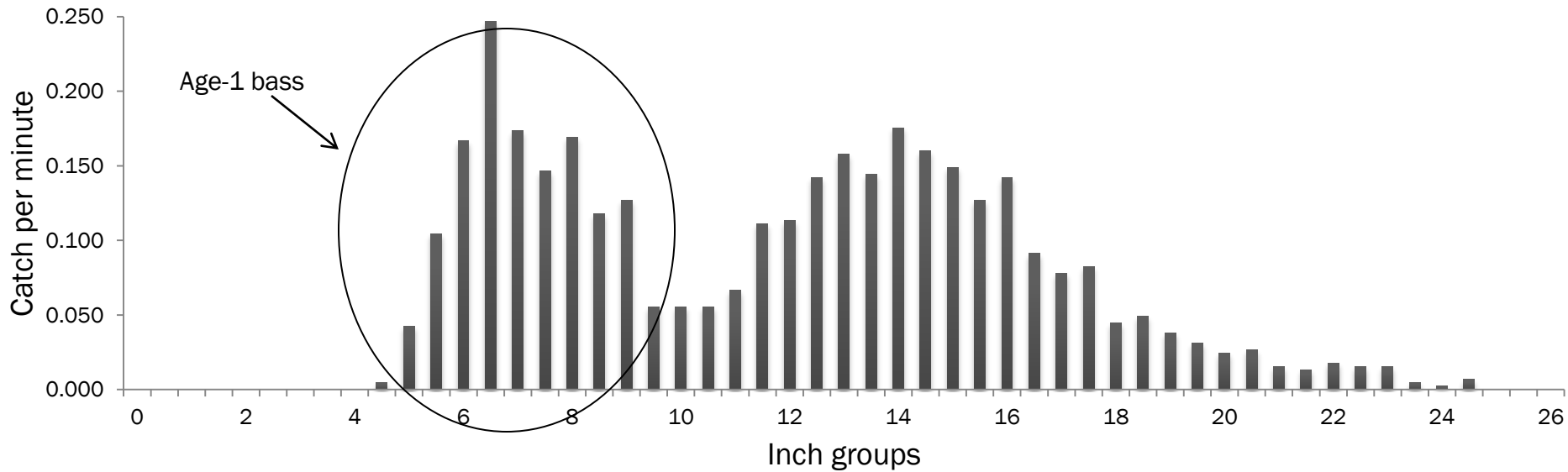
Griffin 2012



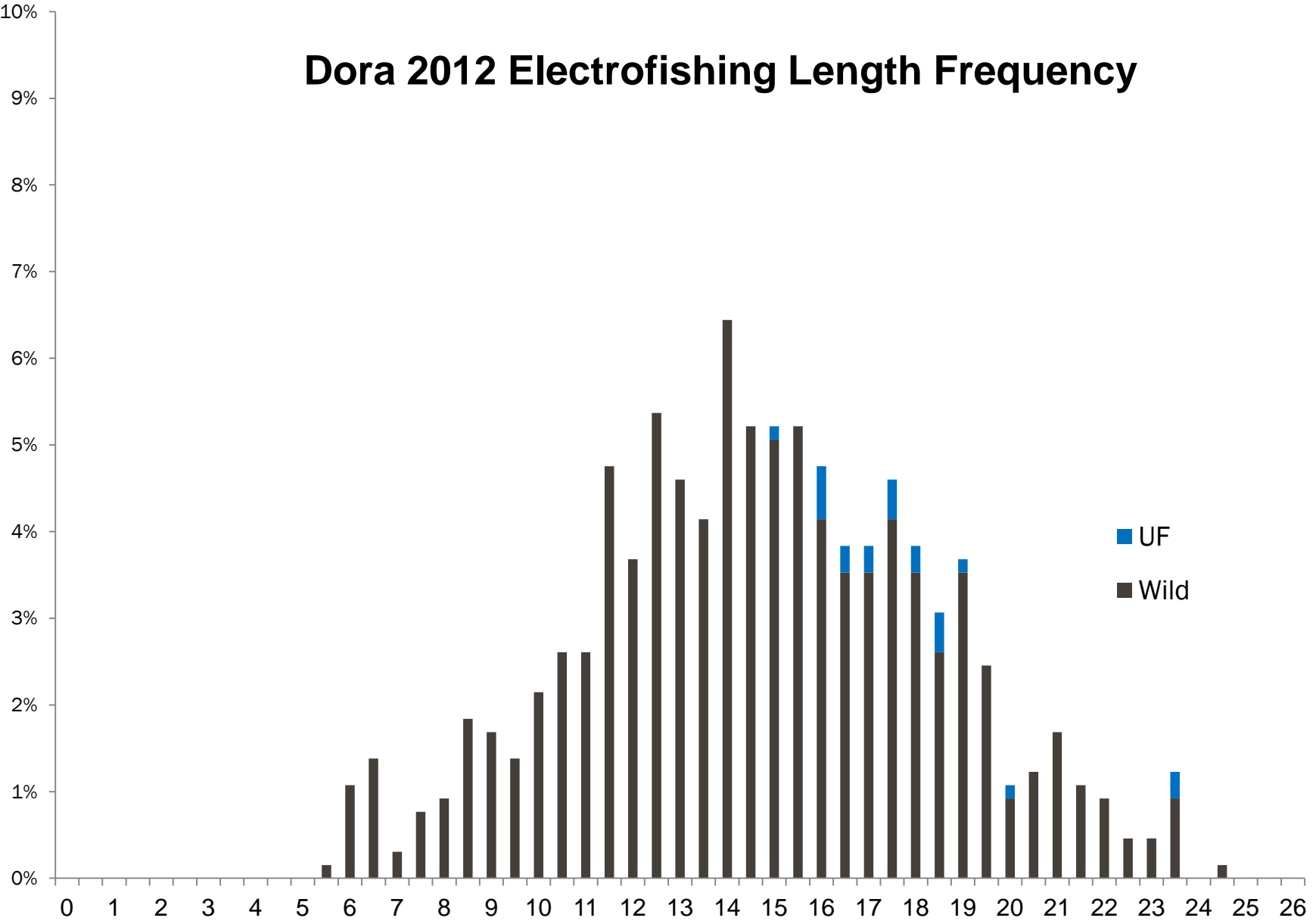
Eustis 2007



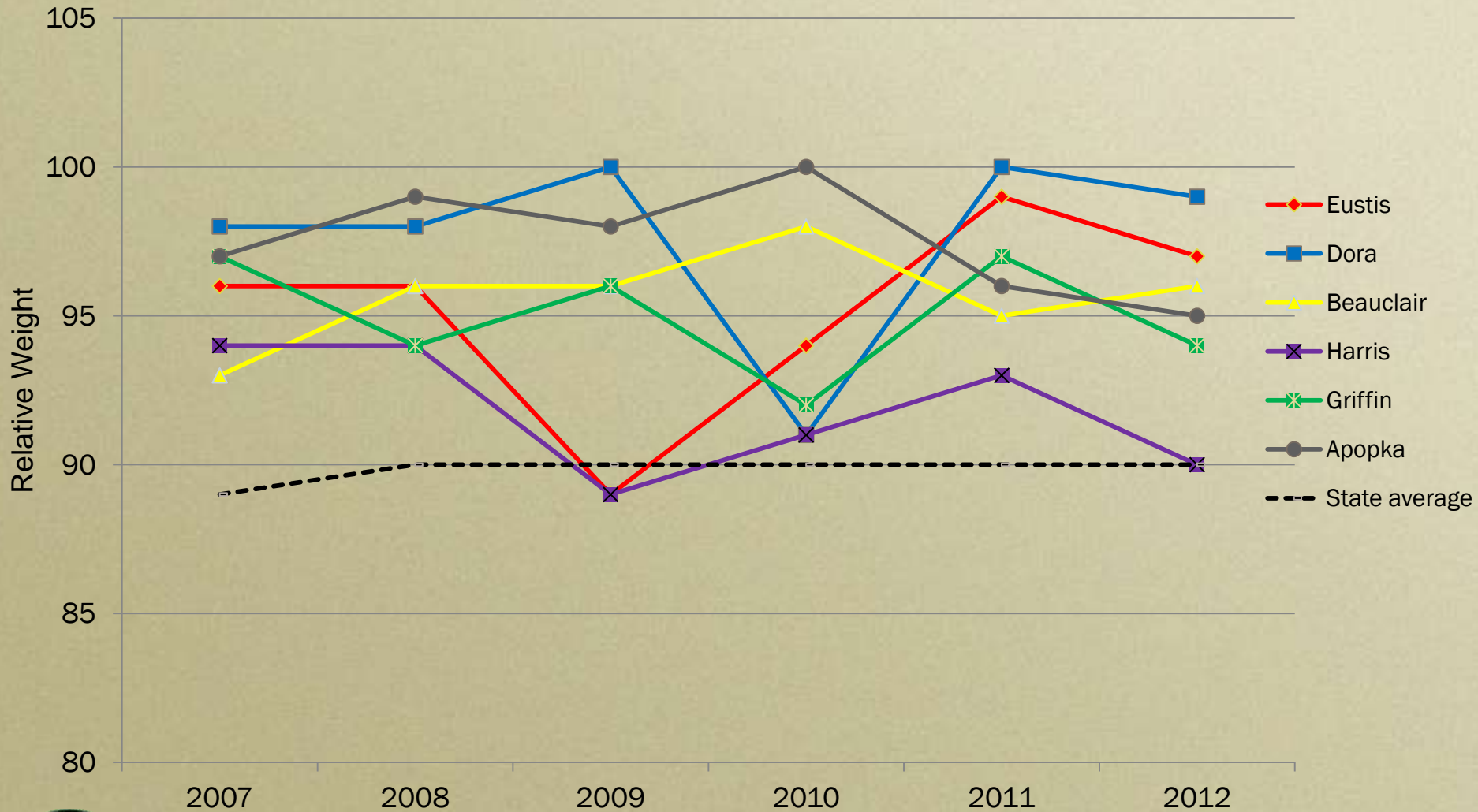
Eustis 2012



Dora 2012 Electrofishing Length Frequency



Condition of Bass (*Relative Weights*)



Griffin



Lake Harris Creel 2011-12

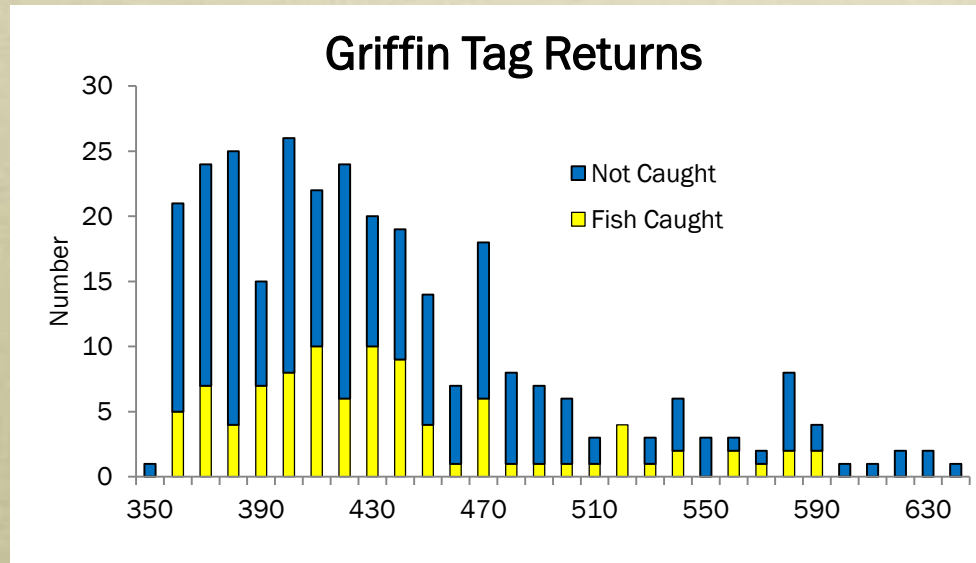
Largemouth bass	2007-08	2011-12
Hours	43,872	50,407
Catch	15,435	26,153
Success	0.32	0.53

- Fisheries managers target 0.25 as goal for quality fishery
- Anglers:
 - 87% fish from boat
 - 78% resident
 - 32% bass tournament



Griffin Exploitation

- 300 fish tagged in lake and canals – high rewards
- Year 1
 - Caught – 20% (60/300)
 - Removed - 2.7% (8/300)
- **Fishing mortality of little concern for population**
 - Recruits and habitat!



Sampling for 2012-13

- Fall community sampling
- Spring bass sampling
- Fall trawling for crappie
- Angler surveys
 - Griffin – evaluate crappie rule change
 - Eustis – Long term monitoring
 - Apopka – Use study as baseline for restoration
- Study to assess the effects of fishing nesting bass
 - Will include Lake Eustis