



Estimated Cost of Rearing and Stocking Phase II Largemouth Bass

Florida Fish and Wildlife Conservation Commission
Dennis J. Renfro and Rick Stout



Florida Bass Conservation Center Certified Fish

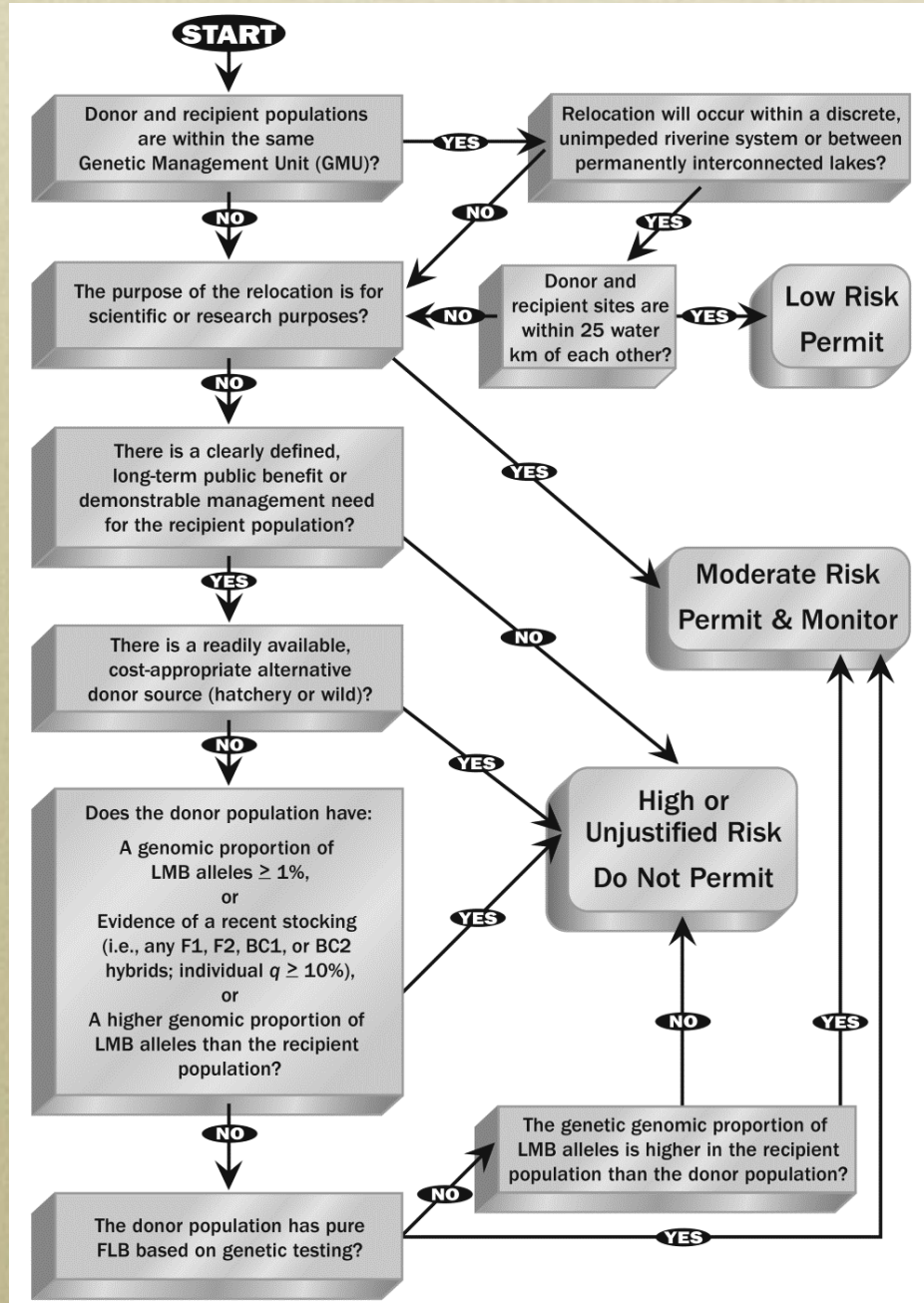
- Tested Genetics of brood stock
- Certified pure Florida Bass
- Brood stock from correct genetic zone often parents from same system
- Hatchery has the ability to produce and supply large numbers
- Health check certified



Florida Fish and Wildlife Conservation Commission

Position Statement *Special Use Permits*

Risk-based decision making process
to provide consistency
for fishery managers



Fish Rearing Process



- Spawning
- Pond grow out
- Fry culture
- Raceway grow out



Fish Rearing and Stocking Costs

- Feed cost \$0.055
- Facility overhead \$0.154
- Labor, Staff, all costs associated with labor hatchery \$0.159
- Total \$0.368/ Phase II LMB



Transportation Cost “stocking”

- High capacity oxygenated hauling rigs ensure survival
- Stocked Size “match the hatch”
- Transportation cost \$.0009/fish or \$0.88/1,000 fish



Cost Estimate to Stock Phase II Largemouth Bass

- Cost estimate average for the FY 2012-2013 years \$ 0.368 per fish
- or \$368/1,000 LMB
- Lake Apopka Scenario \$0.368
(cost/fish) x 150,000 LMB
= \$55,200



Questions



TrophyCatch
My trophy swims in Florida

MyFWC.com

